



\* Product shape may vary when selecting Endurance & Euro range finish

HALO 150 HALF ROUND

## Overview

Our most popular “Designer series” spouting is consistently selected for premium residential builds by Architects and specifiers alike.

Halo 150 brings European Styling to your New Zealand home.

## Features

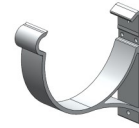
- ✓ European Lineage
- ✓ Stunning aesthetics
- ✓ Premium Material options
- ✓ Huge colour choice
- ✓ Multiple Bracket options to suit
- ✓ Up to 20 year material warranty
- ✓ European accessory options



Halos



Short Rev



Long Rev

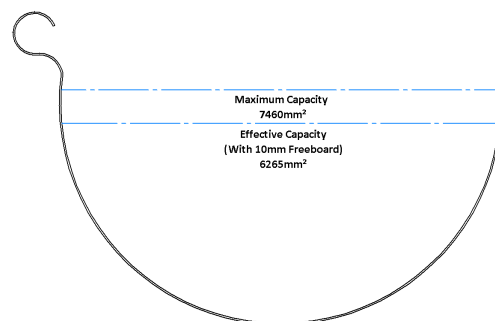
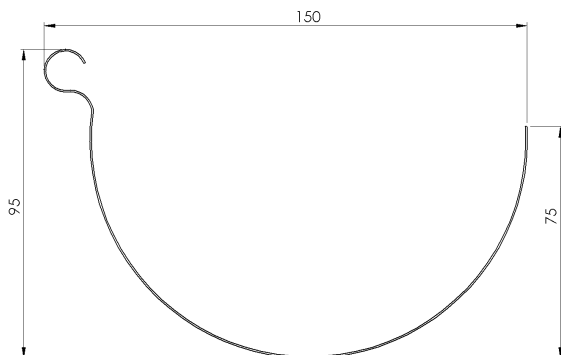
Finish Range	Spouting Material	Colour Choice	Bracket Material	Bracket Options	Downpipe Options
CG Range	MagnaFlow™	Top 15 Colours	Aluminium	Halos Short Rev Long Rev	65mm Round 80mm Round 100mm Round
Designer Range	MagnaFlow™	34 Designer Colours	Aluminium		
Endurance Range*	AlumiGard™	Top 4 Colours	Aluminium		
Euro Range*	EuraMax	4 Premium Colours	Aluminium		
Copper*	Pure Copper	Natural	Copper or Brass		

## Available from these Continuous Group Locations:

NORTHLAND | AUCKLAND | WAIKATO | BAY OF PLENTY  
 TARANAKI | GISBORNE | HAWKES BAY | MANAWATU | WELLINGTON  
 NELSON | MARLBOROUGH | WEST COAST | CANTERBURY | OTAGO | SOUTHLAND



# HALO 150 HALF ROUND



PRODUCT SPECIFICATIONS		CAPACITY SPECIFICATIONS	
<b>MagnaFlow™</b> Pre-painted Steel	0.55mm G300 with a minimum of 200gsm alloy/zinc coating.	Maximum cross sectional area	7,460mm <sup>2</sup>
<b>AlumiGard™</b> Pre-painted Aluminium	0.70mm Grade 5005 H34	Effective cross sectional area with 10mm freeboard	6,265mm <sup>2</sup>
<b>EuraMax</b> Pre-painted Aluminium	0.80mm Grade 5754 H42	Flow Capacity	89 Litres/min
<b>Pure Copper</b> Copper 3/4 Hard	0.55mm Grade C12200	Recommended fall	1:500 = 2mm per 1 metre
Short Rev Bracket	4.00mm Aluminium 6060 T5	Minimum Downpipe cross section	3,215mm <sup>2</sup>
Long Rev Bracket	4.00mm Aluminium 6060 T5	Recommended round standard downpipe sizes	100mm Ø = 7,539mm <sup>2</sup>
Halos Bracket	Diecast Aluminium (LM6)		80mm Ø = 4,776mm <sup>2</sup>
Preston Ornate Bracket	2.50mm Copper or Brass—Hard	Recommended maximum bracket spacing	750mm
Recommended Fixings	Minimum Class 4 screw &/or rivet fasteners compatible with substrate and bracket material.		600mm—where snow fall is possible

<b>Scope of use</b>	Continuous Group rainwater systems are intended to collect and channel water that runs off a roof. It is intended that the metal spouting be placed at the perimeter of the building (Positioned outside the building envelope).
<b>NZBC Compliance</b>	Test information available from Pacific Coilcoaters, New Zealand Steel and Ambro Metals, combined with past history of rainwater products indicate, that provided the product use and maintenance is in line with the guidelines contained in the current literature, Continuous Group rainwater systems can be expected to meet the performance criteria in clause E2 of the New Zealand building code.
<b>Durability</b>	All copper, brass and aluminium products listed above are fit for purpose in environment zone B, C, D and E* Pre-painted steel products are fit for purpose in environment Zone B and C* They may be used in environment zone D subject to a pre-approval warranty application based on site address* *In all cases, areas with high wind &/or salt &/or thermal/industrial atmospheric conditions may require specific engineering design (S.E.D) Reference: Section 4, "Durability" from NZS3604:2011.
<b>Maintenance</b>	Continuous Group rainwater systems require regular maintenance to ensure the useful life of the products. Minimum maintenance interval of every 6 months or as often as needed to avoid build up of contaminants (dirt, salt, pollen etc.) on the spouting surface. Simply spray and rinse with water and/or if necessary scrub with a soft nylon brush. More information and specific maintenance products are available on our website <a href="http://www.continuous.co.nz/care-and-maintenance">www.continuous.co.nz/care-and-maintenance</a>
<b>Warranty</b>	<b>MagnaFlow™</b> : Environment zone B & C—10 year paint warranty ; 12 year perforation warranty. <b>MagnaFlow™</b> : Environment zone D—10 year paint warranty ; 10 year perforation warranty. <b>AlumiGard™</b> : 10 year paint warranty ; 12 year perforation warranty. <b>Pure Copper &amp; EuraMax</b> : 20 year material and perforation warranty. Full details and conditions of our comprehensive warranty can be found at <a href="http://www.continuous.co.nz/warranties">www.continuous.co.nz/warranties</a>